

Welcome Millburn Kindergarten Parents

Tuesday, August 22, 2017
6:00PM



School Administration

Principal- Ben Walshire

Assistant Principal- Adam Rowlands

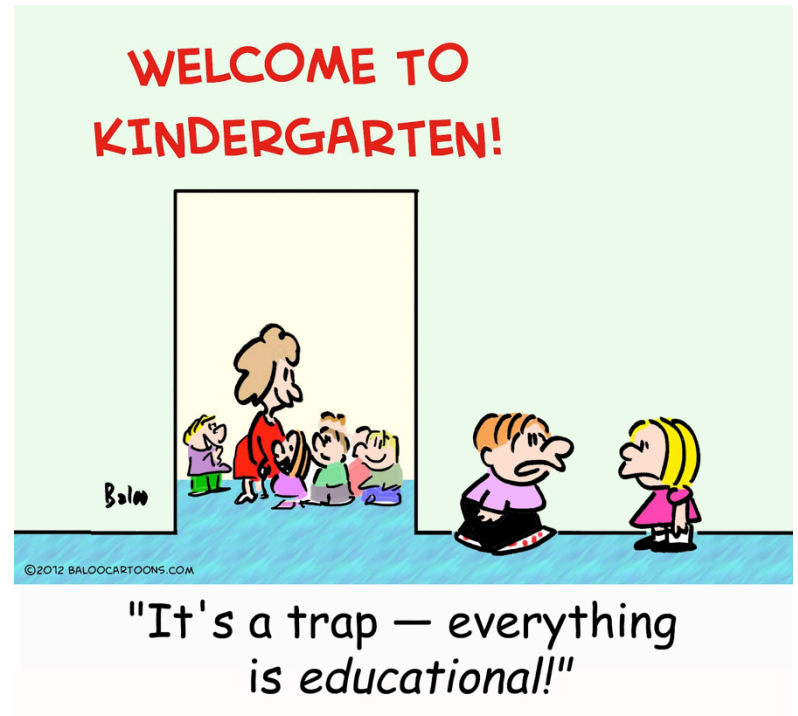
Purpose of KDG Parent Night

This night is designed to educate parents on the grade level curriculum and classroom information. Feel free to ask questions not only tonight, but also throughout the year at anytime.



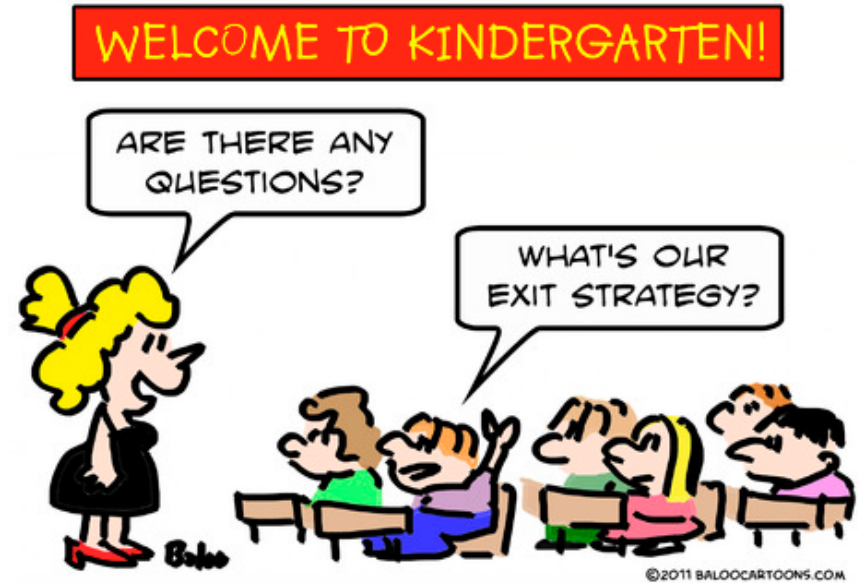
Agenda

- Introductions
- School Information
- Bus Information
- PTO Information
- Millburn Education Foundation
- School Volunteers
- Classroom/Teacher Visit



A Typical KDG Parent May Ask.....

- Will they know where to go on the first day?
- How does lunch time work?
- Will my child have rest time?
- Will my child learn to read and write in kindergarten?
- My students already reads and writes, how will my child be challenged?



Millburn School District

- Superintendent- Dr. Jason Lind
- Business Manager- Dr. Steven Johns
- Director of Student Services- Ms. Elizabeth Keefe
- Director of Technology- Ms. Joanne Rathunde
- Middle School Principal- Mr. Jake Jorgenson

Kindergarten Teachers

- Ms. Aunet
 - Ms. Bell-Nance
- Ms. Frank
 - Ms Veres
- Ms. Polenzani
 - Ms. Shey
- Ms. Jazo
 - Ms. Cermack

Support Staff

- Ms. Bethencourt- Social Worker
- Specials
 - Mr. Lacey-Art
 - Mr. Gorr- Music
 - Ms. Dajka- Technology
 - Ms. Michel/Ms. Hoetzer- PE

Millburn Elementary Information

- EC-5 with about 720 students
 - SEDOL
 - SPECTRUM
 - RED APPLE
- 65 certified teachers
- 23 Paraprofessionals
- 4 Office Staff
- School Day 8:00-2:30
- Early Release once a month at 1:00 PM
- 30 minute recess, 30 minute lunch

Basic Info

- Call absences in by 9:00 AM.
- If changes in dismissal procedures are needed, a written note must be submitted into the office by 12:00 PM
- If picking child up at the end of the day, parents are asked to sign their child out in the foyer

Basic Info

- Nurse
 - Contact if medication is needed during the school day or for other health concerns the school needs to be aware of
- Healthy Choices
 - Nutritional snack and lunches
 - Birthday Treats- non edible (EX: gift bags of pencils, erasers, charms, star wars stickers)
- Principal Weekly Newsletters via email
- Virtual Backpack on website
- Website- www.millburn24.net

Lunch/Recess

- 30 Minutes of Lunch
 - 11:20-11:50
 - Students sit with their homeroom
 - Due to allergies, cold lunch students will sit at the ends of tables
- 30 Minutes of Recess
 - 11:50-12:20

1st Day

- Take personal pictures before leaving home (or during Supply Drop Off)
- Plenty of supervision to assist students in the hallways
- Teachers meet students out by the buses, paraprofessionals meet students that get dropped off.

2nd Day- LUNCH

- Lunch time is a VERY new process for students and the more hands we have to help the better.
- If you are available from 11:20-11:40, please come and join us in the cafeteria to help with our KDG students.

Early Release

- First Wednesday of Every Month
 - Dismissal at 1:00
- Nov 20th and 21st - 11:00 Dismissal
 - Parent/Teacher Conferences from 12-8

Absences

- Kindergarten tends to be the grade level with the highest absence rate.
- Why Attendance Problems Exist
 - There are a number of causes for low attendance in kindergarten. Some families are not aware of the importance of attendance in early education: some see kindergarten attendance as optional. Sometimes, a child misses school because he or his parent has negative feelings about school. For example, frequent school refusal behaviors and school day illness can be related to a child's anxiety about going to school. Other issues influencing attendance can include a lack of routine, transportation issues, parent work hours, or unstable housing.

Days can add up

- 5 days = 1 week of school
- 15 days = 3 weeks of school

Instruction can never be effectively made-up. Early learning is crucial in the developmental success of a child. Regular school attendance is a critical component to that.

Bus Information

Laura Sikorski



Volunteering

- Volunteer Recess Supervision
 - Tracy Behnke at tracybehnke@hotmail.com
- MES Volunteering Program
 - Alicia Keys at avkeys@keysfamily.net

PTO Information

Dani Krieschen- Treasurer



What is the Millburn District 24 PTO?

Our mission statement is to enhance the relationship between home and school. To maintain the working rapport that exists between parents and school staff. To supplement the needs of the school with funds in order to provide the best possible educational experience for the students in Millburn District 24.

With your help last year we were able to raise over \$52,885 for the district

- \$22,000+ was donated to all grades through the Student Enhancement Fund where every student receives \$18 to help fund FIELD TRIPS like Green Meadows Farm and Animal Gardens!
- \$2400 was provided to all teachers to help offset the cost of classroom supply expenses with a stipend at Brainstorm!
- \$10,668 was provided in funds for SPECIAL REQUESTS including a Raptor Visitor ID System, Playground Bench, Greg Tang Math Kit Program, Smart TV for cafeteria, Speech supplies and more!
- \$4000+ was provided to sponsor School Assemblies!
- \$2300+ was provided to sponsor MES Holiday Celebrations!

How did we raise \$52,885?

- KidStuff Coupon Books
- World's Finest Chocolates
- School Portraits
- Wendy's Nights
- Box Tops
- Kids Resale
- Millburn Family Fun Run
- Fall Fest

What else does PTO do?

- PTO coordinates Fall and Spring Book Fairs and last year we raised over \$19,160 in Scholastic dollars to provide books for both LRCs!
- PTO offers Supply Kits and LockerWorks!
- PTO sponsors three Family Fun Nights at MES!
- PTO sponsors Holiday Celebrations at MES!
- PTO sponsors a District Wide Talent Show at MMS!
- PTO sponsors our annual Fall Fest at MES!
- PTO hosts staff luncheons and treats throughout the school year!
- PTO decorates the schools, offers Spirit Wear, and much more!

How can you help?

- **EASY!! NEW** this year is the PTO Fundraiser Buyout! Help us fundraise smarter and earn **FREE PTO Membership!**
- Choose to support us with a purchase of a KidStuff Coupon Book and/or World's Finest Chocolate!
- **SEND IN BOX TOPS!!!** We earned almost \$5000 last year!
- Sell at Kids Resale! It's a **WIN WIN!**
- Choose **ONE** committee and give **ONE** hour of your time!

PTO Membership

- Register at www.MillburnPTO.com
- All families that register by 9/30 will be included in the PTO directory! Great for setting up playdates with new friends and birthday party invitations!
- \$15 membership benefits include: printed directory, paperless PTO app for one device, vote on how money is raised and spent, funds our website where you can access sign-ups, calendars, membership directory, purchases and more!
- We meet FIVE times per school year! If you can't attend, our minutes are posted online!

PTO Upcoming Events

- September 16th - FALL FEST at MES
- September 20th - Welcome Back PTO Meeting at 7pm at MMS Media Center
- October 20th & 21st – Kids Resale at MMS
- October 27th – Holiday Celebration at MES
- October 27th – Family Fun Night at MES

PTO-Who to Contact?

- Please feel free to contact any of the 2017/18 Millburn District 24 PTO Members:
- Lisa Griesser – Middle School President
- Open – Elementary School President
- Melissa Hyde – Vice President
- Dani Krieschen – Treasurer
- Amber Fendel - Secretary



Kids Resale!!



Family Fun Run!!



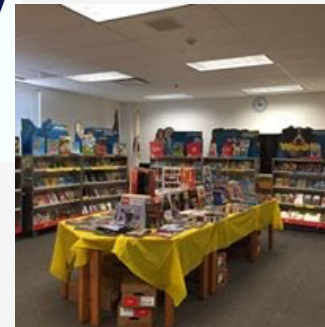
Gaga Pit!!



**Recess Balls,
WFC and
Spirit Wear!!**



**Parent Night
Out!!**



**Book
Fairs!!**



Fall Fest!!



Millburn Education Foundation

President- Kari Gedville





***501(c)(3) charitable organization**

Board Members

Kari Gedville-President

TJ Kelly- Vice President

Mike Silk- Treasurer

Abby Bradley- Secretary

Meghan Edelmann

Shynell Newell

Valerie Powley

Ron Vawter

What does the Foundation do?

The purpose of the Foundation is to creatively generate, accept and distribute resources to enrich and enhance the opportunities and educational experiences of the District's students.

Where does the money go?

- Annual college scholarships awarded to graduating high school seniors who are Millburn graduates
- Over \$300,000 given to the District for the purchase of classroom projectors, iPads/carts, interactive touchscreens and audio enhancements.
- Annual funding to the District for at need student participation in the Camp Timberlee (6th grade) and Springfield (8th grade) trips
- **Starting this past school year, the Foundation's focus is fundraising to support the district's implementation and vision in STEM education at the elementary and middle school.**

Fundraising Efforts

- 24 for 24
 - Included in registration packets

Millburn Cup Golf Outing – September 15, 2017 at Brae Loch Golf Course

18 hole shotgun start

Food truck lunch

BBQ Productions Pig Roast with raffle

Millburn Madness – February 24, 2018 at Austin's Fuel Room

Appetizers

Silent & live auction

Private band performance

How can you support the Foundation?

- Attend one of our annual events.
- Volunteer your time as a board member or provide assistance with a Foundation event.
- Direct financial gifts and check to see if your company will match your donation to the Foundation. All donations are tax-deductible and will be acknowledged with a letter for tax purposes.
- Provide donated goods or services for our silent and live auctions at our events.

Contact us

Website:

www.millburneducationfoundation.org

“Like” us on Facebook



Dismissal to Classrooms

